

Elevation Motor 625T, 770T


Kit Number PKMR-23291 or PKMR-23292

Installation Instructions

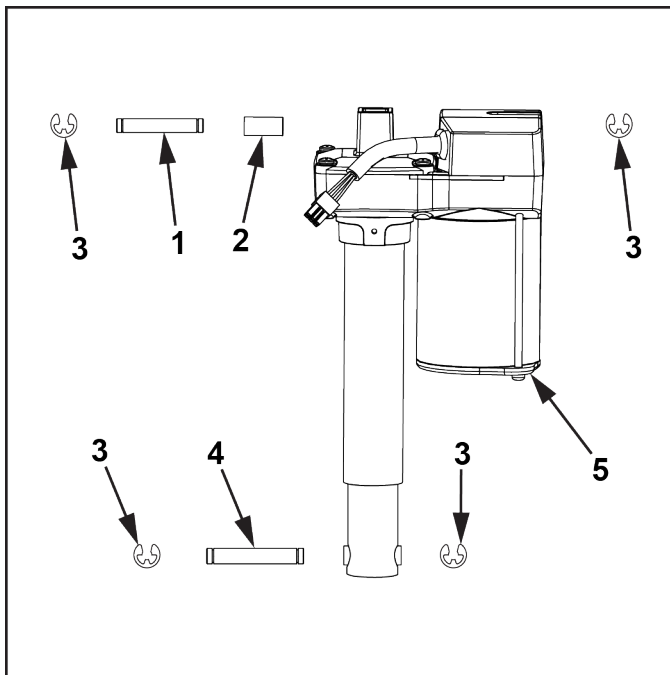
This instruction sheet describes how to install the elevation motor for Cybex treadmill model 625T or 770T.

Tools Required:

- Phillips screwdriver
- Flat head screwdriver
- Block, 4" (10 cm), (2)
- 9/16" Open end wrench (for older models with bolt mounts)
- 9/16" Socket wrench (for older models with bolt mounts)
- Tape measure
- Grease, White lithium

 Read and understand all instructions thoroughly before installing this kit.

Verify the kit contents shown.



	Description	Qty.
1	Shaft, FM-25595	1
2	Sleeve, FT-16825	1
3	Retaining Ring, HX-25594	4
4	Shaft, tube nut FM-24429	1
5	Elevation Motor, MR-22417, 115 VAC or MR-22418, 220 VAC	1

Disconnect power source

Unplug the power cord from the power outlet.

WARNING

Shock and electrocution hazard.

- Unplug unit and let sit 10 minutes before cleaning or performing maintenance.
- Electrical charge can remain in unit after unplugging.
- Keep water and liquids away from electrical parts.

Place blocks under frame

⚠ WARNING

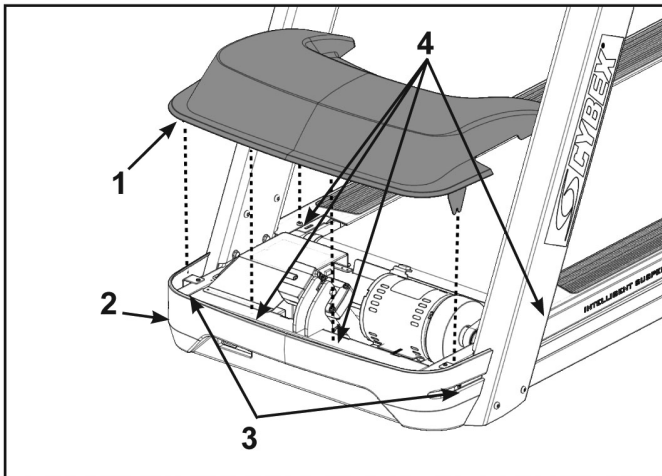
Heavy equipment.

- At least two people must lift, move or assemble unit.
- Use safe lifting methods.

Lift the front of the treadmill with two people, have a third person place a 4" (10 cm) block under each side of the frame to support the front end of the treadmill. This will get the weight of the treadmill off the elevation wheels and provide support.

Remove motor cover

1. Loosen, but do not remove the two front cover screws securing the motor cover using a Phillips screwdriver.

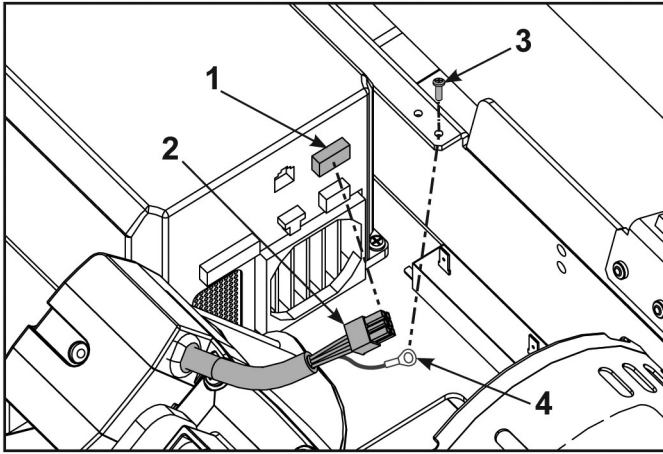


	Description	Qty.
1	Motor Cover	1
2	Front Cover	1
3	Screws	2
4	Plastic Connectors	4

2. Remove motor cover by carefully lifting vertically. Do not break the four plastic connectors.

Disconnect elevation motor cable

1. Remove the ground wire screw securing the ground wire using a Phillips screwdriver.



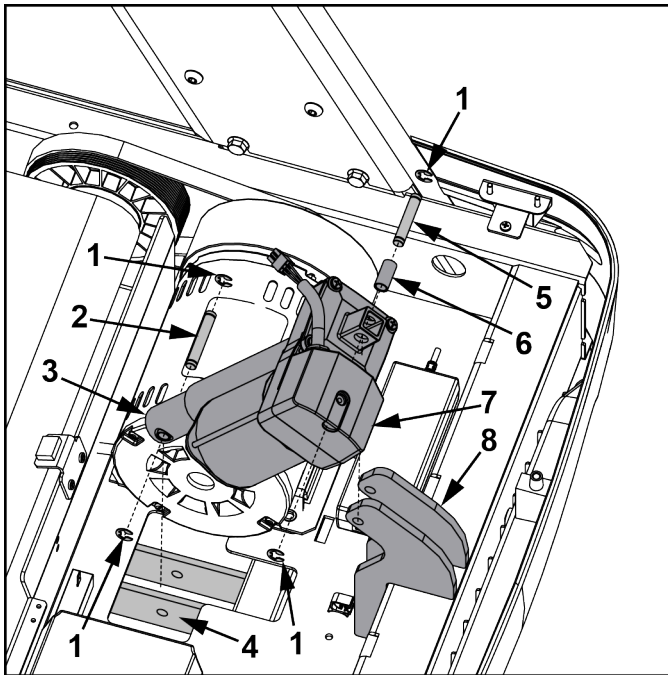
	Description	Qty.
1	Motor Controller Connector	1
2	Elevation Motor Cable	1
3	Ground Wire Screw	1
4	Ground Wire	1

2. Disconnect the elevation motor cable by un-latching the connector from the motor controller connector.

Remove elevation motor

Older models use bolts, sleeves, and nuts to secure the tube nut. If used, these will be discarded and replaced with shafts and retaining rings. Use a 9/16" Open end wrench and a 9/16" socket wrench for removal.

1. Remove a retaining ring from the tube nut shaft using a flat head screwdriver.



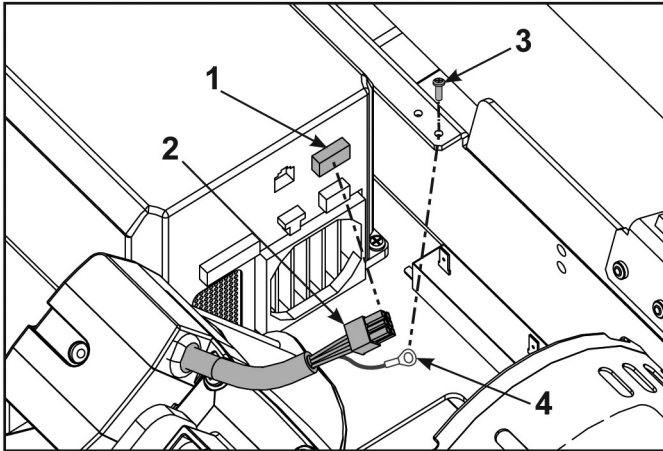
	Description	Qty.
1	Retaining ring	4
2	Tube nut shaft	1
3	Tube nut	1
4	Tube nut mounts	1
5	Motor mount shaft	1
6	Sleeve	1
7	Elevation motor	1
8	Frame mounts	1

2. Slide the shaft out of the tube nut mounts.

3. Remove a retaining ring from the motor mount shaft using a flat head screwdriver.
Hold the motor while you remove the shaft so that the motor doesn't fall.
4. Lift and remove the elevation motor from the treadmill.

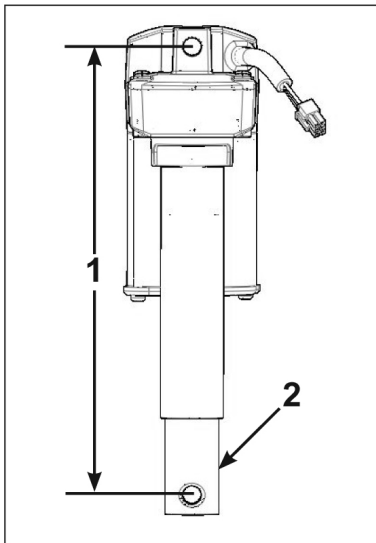
Calibrate elevation motor

1. Plug the elevation motor cable into the motor controller connector.



	Description	Qty.
1	Motor Controller Connector	1
2	Elevation Motor Cable	1
3	Ground Wire Screw	1
4	Ground Wire	1

2. Install the ground wire screw securing the ground wire using a Phillips screwdriver.
3. Connect the main power cord into the power outlet.
4. Turn the main power switch to the on (I) position.
The elevation motor will now rotate to find the zero percent position.
5. Wait for the elevation motor to stop turning.
6. Turn the tube nut with your fingers until it measures the correct center to center length. This length is measured from the center of the top hole to the center of the bottom hole.

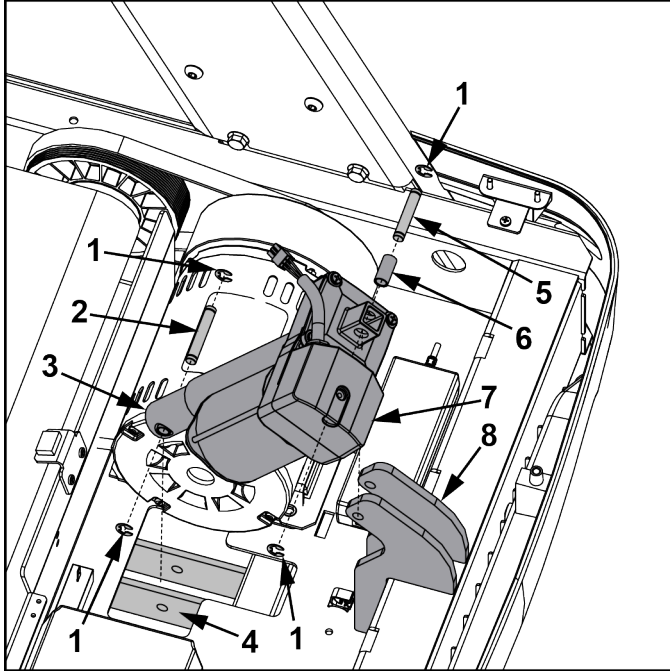


	Description	Qty.
1	Center to center length	11.75" (29.8 cm)
2	Tube Nut	1

7. Unplug the power cord from the power outlet.

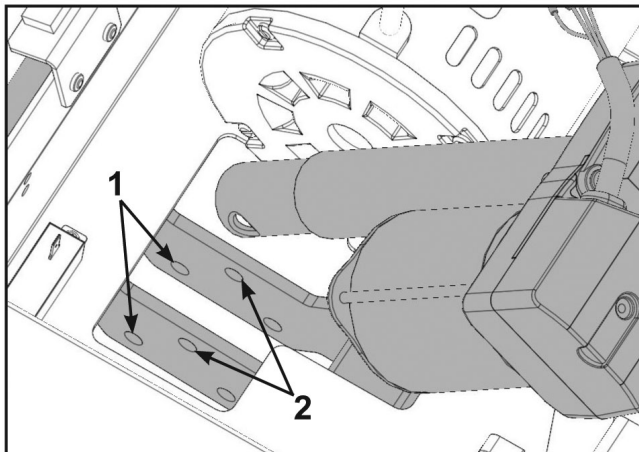
Install elevation motor

1. Place the elevation motor in position on the treadmill.



	Description	Qty.
1	Retaining ring	4
2	Tube nut shaft	1
3	Tube nut	1
4	Tube nut mounts	1
5	Motor mount shaft	1
6	Sleeve	1
7	Elevation motor	1
8	Frame mounts	1

2. Install one retaining ring on the motor mount shaft and one on the tube nut shaft.
 3. Apply white lithium grease to the motor mount and tube nut shafts.
 4. Slide the motor mount shaft into the frame mounts and elevation motor.
 5. Slide the tube nut shaft into the correct set of mounting holes and the tube nut. The 625T treadmill has one set of mounting holes.



	Description	Qty.
1	790T mounting holes	2
2	770T mounting holes	2

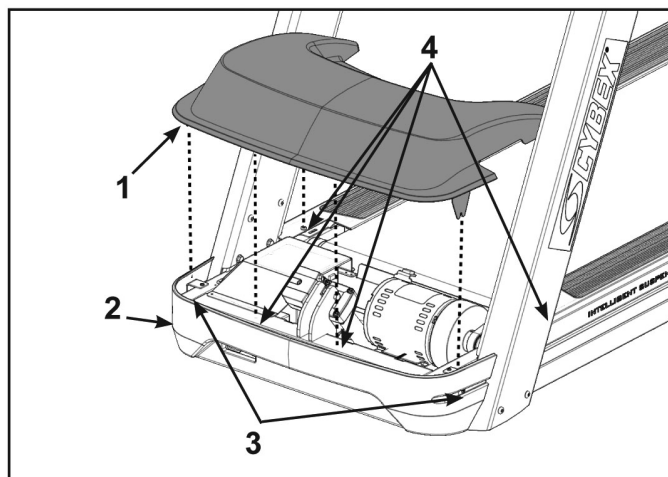
6. Install retaining rings to secure the motor mount and tube nut shafts.

Test elevation motor

1. Plug the power cord into the power outlet.
2. Start the treadmill in Manual Mode and raise the elevation until the 4" (10 cm) blocks can be removed.
3. Remove the 4" (10 cm) blocks.
4. Lower the elevation to zero percent.
5. Unplug the power cord from the power outlet.

Install motor cover

1. Place the motor cover into position vertically by aligning the two tabs and four plastic connectors. Two plastic connectors are mounted in the front cover and two in the motor cover. If motor cover top does not fit properly, loosen the side screws as needed.



	Description	Qty.
1	Motor Cover	1
2	Front Cover	1
3	Screws	2
4	Plastic Connectors	4

2. Tighten the two front cover screws using a Phillips screwdriver. Be sure the screws are securing the motor cover's tabs.

Complete installation

1. Plug the power cord into the power outlet.
2. Verify the power cord is not being pinched under the front of the treadmill.
3. Operate the unit at all levels to verify proper operation.

Cybox® and the Cybox logo are registered trademarks of Cybox International, Inc.

10 Trotter Drive, Medway, MA 02053 • 508-533-4300 • FAX 508-533-5183

© Copyright 2015, Cybox International, Inc. • www.cyboxintl.com • LT-23322-4 E • August 2015